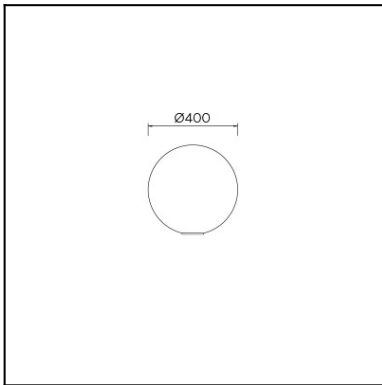




The photograph may not match the reference exactly. Please read the product description to identify the finish.



TECHNICAL CHARACTERISTICS

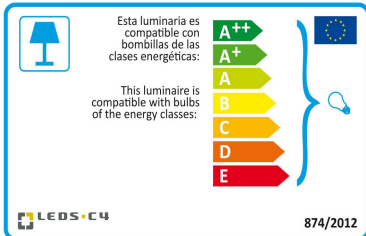
Type:	Table lamp
IP Protection degrees:	IP44
IK Protection degrees:	IK06
Light source 1:	1 x E27 MAX 150W
Total power consumption (W):	150
Voltage / Frequency:	230V/50-60Hz
Warranty (Years):	2
Units per box:	2
Net Weight (Kg):	1.5
EAN:	8435111082782



MATERIALS / FINISHES

Structure material:	Methacrylate	Diffuser material:	Methacrylate
Structure finish:	White	Diffuser finish:	Opal

Download photometric file .ldt /.ies

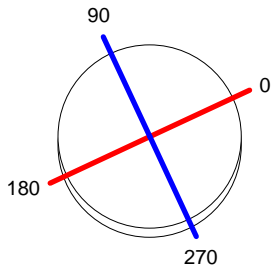


Click on image to download energy label

Luminaire		Measur.		Lamp	
Code	55-9156-Y4-M1	Code	55-9156-Y4-M1	Code	DELN2341
Name	Bola diám. 400 1x23W TC-EL E27	Name	Bola diám. 400 1x23W TC-EL E27	Number	1
Line	Eulumdat	Date	17-11-2008	Position	
Efficiency	72.06%	Coordinate system	CG	Total Flux	1500.00 lm
Maximum value	101.77 cd	Position	C=90.00 G=75.00	Double Symmetrical	
Round Luminaire	Diam.	400 mm	Height	400 mm	
Round Luminous Area	Diam.	400 mm	Height	400 mm	
Horizontal Luminous Area	0.125664 m2	Emitting area on Plane 180°	0.160000 m2		
Emitting area on Plane 0°	0.160000 m2	Emitting area on Plane 270°	0.160000 m2		
Emitting area on Plane 90°	0.160000 m2	Glare area at 76°	0.185648 m2		
Symmetry Type	Double Symmetrical	Maximum Gamma Angle	180		
Measurement Distance	0.00	Measurement Flux	1500.00 lm		
Operator	OxyTech	Source voltage			
Temperature	25.00 °C	Source current			
Humidity	60.00 %	Photocell			
Notes					

Luminaire Lamps					
Line	Code	Name	Flux [lm]	Pow. [W]	Q.ty
Eulumdat	DELN2341	DELN2341 - 23.00 W	1500.00	23.00	1
C.I.E.	22 47 74 55 72	D DIN 5040	C11		
F UTE	0.40 J + 0.32 T	B NBN	BZ 9 / 0.8 / BZ 8 / 1 / BZ 9 / 2.5 / BZ 8		

Diam=400mm



C Halfplanes

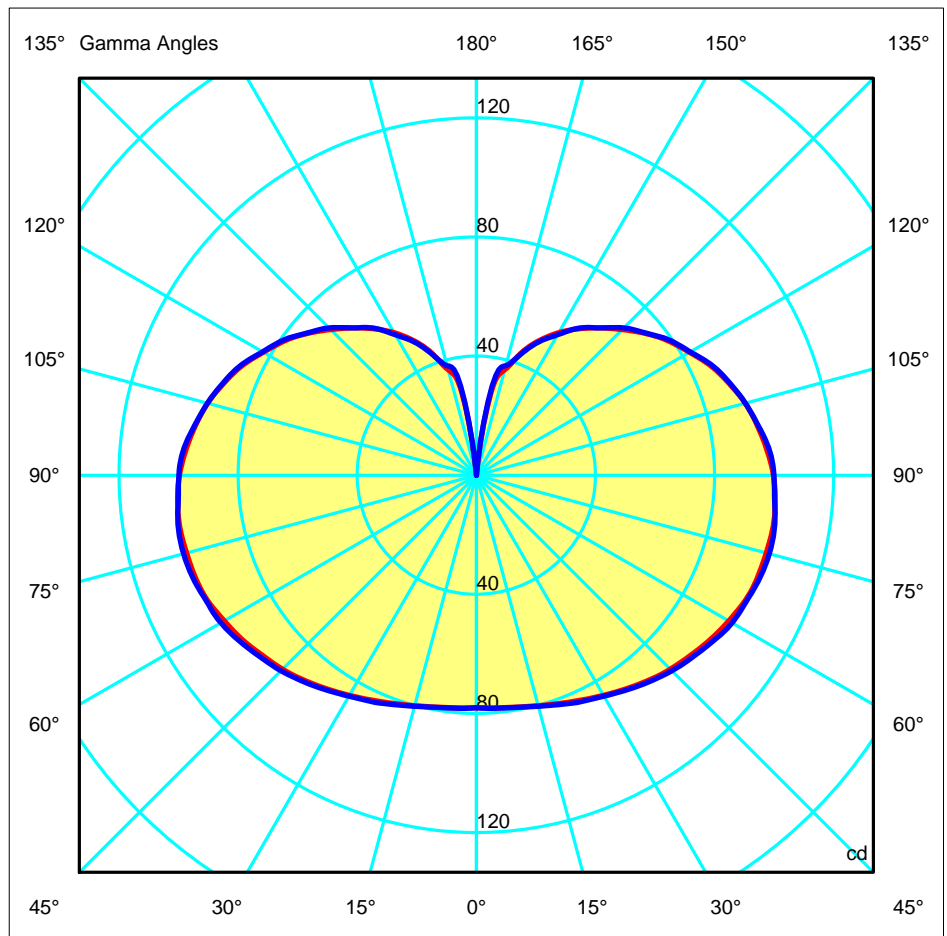
180.0 — 0.0

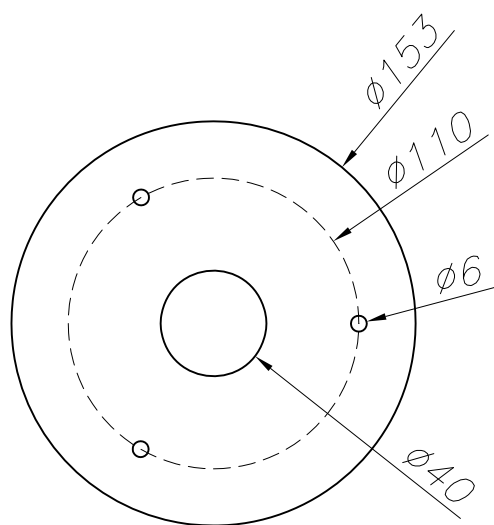
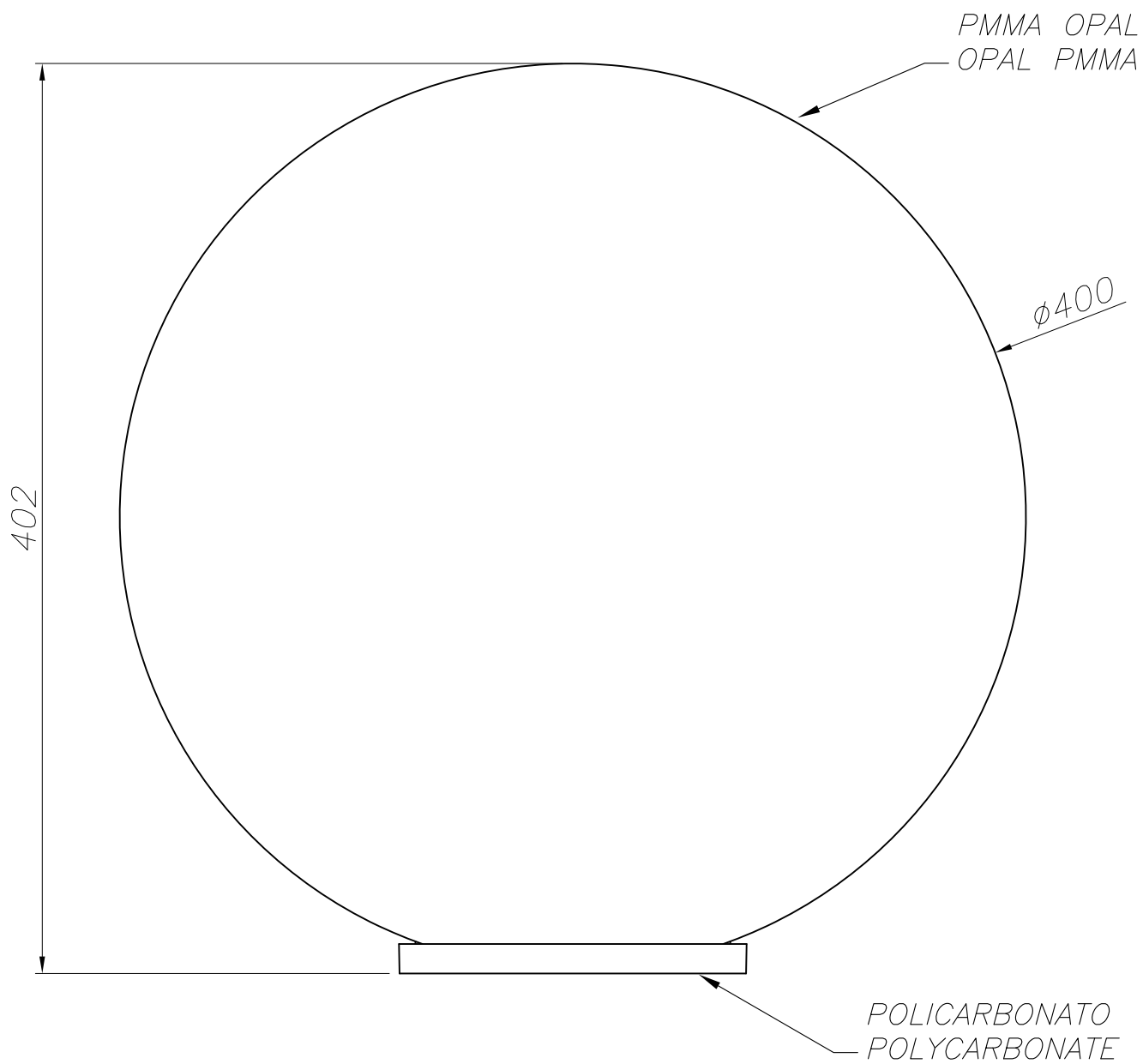
270.0 — 90.0

ULOR 32.27 %

DLOR 39.79 %

RN 44.78 %





PLANTILLA DE INSTALACIÓN
INSTALLATION TEMPLATE

